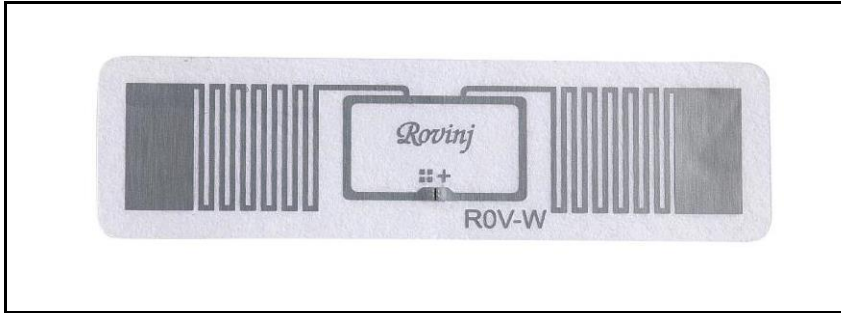


1. Product Introduction

ROV-W is a self-developed and designed self-adhesive RFID tag specially designed for the footwear industry by our company. It adopts special self-adhesive materials and glue encapsulation compound to effectively solve the pressure, high temperature, electromagnetic in the implant environment. Interference and other factors ensure the consistency of the RFID tag after it is implanted into the product, and provide the most powerful security guarantee for the data collection of the brand's supply chain;

2. Physical photos



3. Product characteristics

- ◆ Special material composite;
- ◆ The label has strong anti-interference ability;
- ◆ Excellent label consistency;
- ◆ Independently developed antenna design;
- ◆ Special implantable for footwear industry;

4. Technical parameters

Main performance index	
Product number	ROV-W
Product Size	47.6mm*9.8mm
protocol	EPCglobal C1 Gen2 and ISO18000-6C
chip	NXP-UCODE7
working frequency	860-960MHz
EPC storage space	128Bit
Reading	About 3-6m (depending on working environment and reader)

广州市白云区云城街萧岗花园路 10 号之一 228 创意园 G 栋 301 室

Rm 301, Bldg G, 228 Creative Park, 10-1 Xiaogang Garden Rd, Yuncheng Str, Baiyun Dist, Guangzhou, Guangdong, China

Web: www.rovinj.cn Email: sales@rovinj.cn Tel: 020-26298802

distance	
Material	PET+special surface material+special glue
Packing	5000 Pcs/roll, 1 roll/box (based on actual shipment)