

RFID



# ROV-V5214 leather sticker specifications

**Guangzhou Rovinj Mdt InfoTech Co., Ltd.**

广州市白云区云城街萧岗花园路 10 号之一 228 创意园 G 栋 301 室

Rm 301, Bldg G, 228 Creative Park, 10-1 Xiaogang Garden Rd, Yuncheng Str, Baiyun Dist, Guangzhou, Guangdong, China

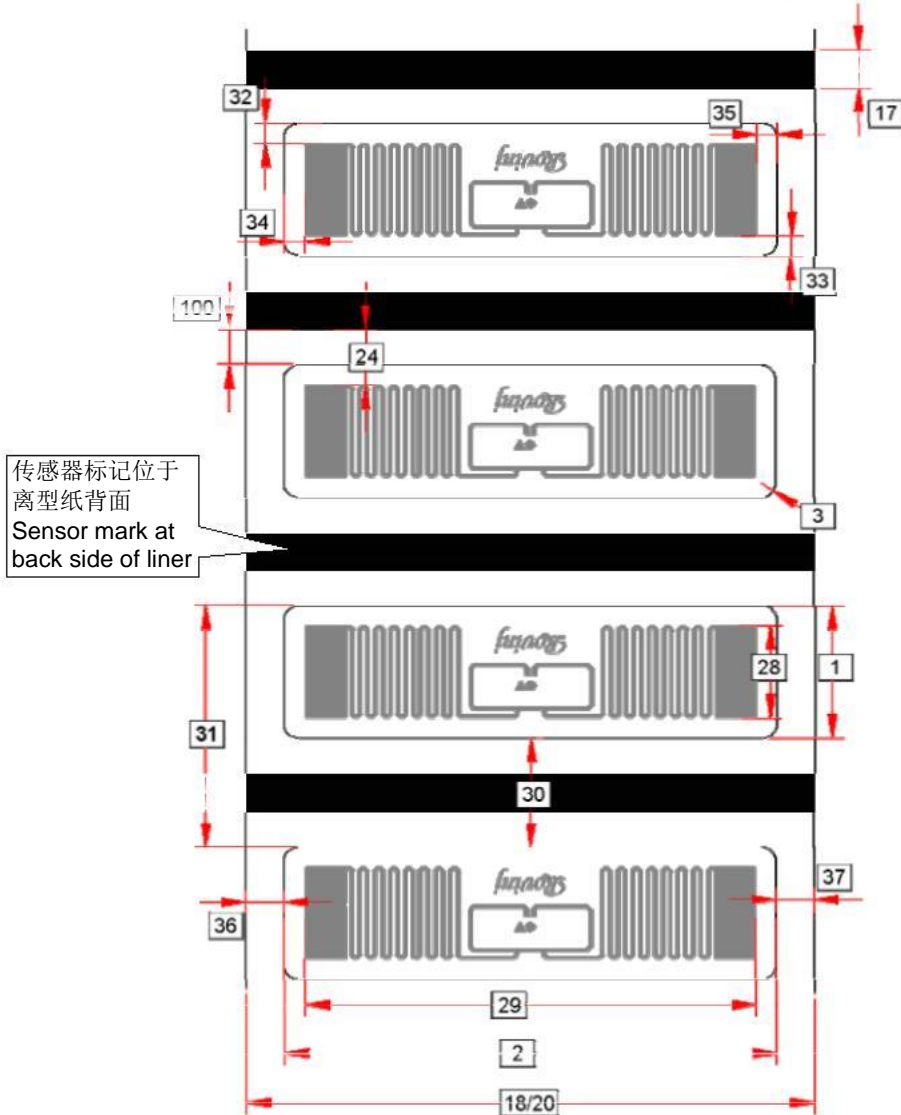
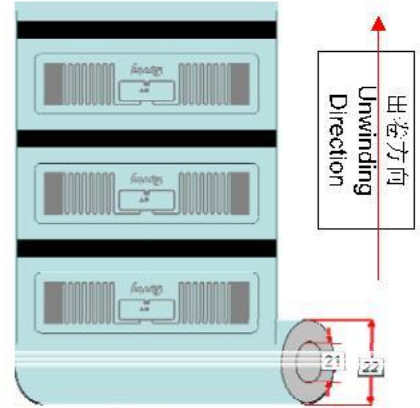
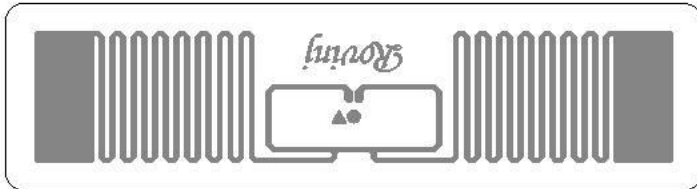
Web: [www.rovinj.cn](http://www.rovinj.cn) Email: [sales@rovinj.cn](mailto:sales@rovinj.cn) Tel: 020-26298802

P.N./Revision	Data Sheet	Page
T1A10XXX/L2		1/3

## ROV-V5214 14.00x52.00mm White Wet Inlay

### 1. 物理特性 (Mechanical Characteristics)

#### 1.1 外形 (White Wet Inlay)



<b>P.N./Revision</b>	<b>Data Sheet</b>	<b>Page</b>
<b>T1A10XXX/L2</b>		<b>2/3</b>

**2. 电气特性 (Electrical Characteristics)**

项目 (Item)	描述 (Description)	备注 (Remarks)
制造商 / 芯片 Manufacture / IC	Impinj/Monza 5	
基材材质 Base Material	PET	
天线制程方式 Antenna	铝蚀刻Al(9µm)+PET(50µm) Etched Aluminum (9µm) + PET (50µm)	
符合标准 Protocol	ISO/IEC 18000-6C EPC Class1 Gen2	
芯片存储区 Memory	EPC	128Bits 可读可写 Read & Write
	TID	48Bits 可读不可写 Read Only
	Unique TID	48Bits 可读不可写 Read Only
	密码区 Password	32Bits访问密码 32Bits Access 32Bits毁灭密码 32Bits Kill 可读可写 Read & Write
	用户区 User	32Bits 可读可写 Read & Write
适用载波频率 Frequency	860~960MHz	
工作模式 Operating Mode	无源 Passive	
芯片使用寿命 IC Life	写 10万次, 数据保存 50年 100,000 Programming cycles, 50 years data retention	
芯片防静电(ESD)性能 ESD Voltage Immunity	最大 2000V Max. 2000V	人体模型(HBM) Human being mode(HBM)

**3. 环境要求 (Environmental Requirement)**

贴标温/湿度(Operating Temperature/Humidity): [10°C to 40°C] 20% to 80%

适用温度: [-20°C to +50°C]

(因被贴材质不同而有差异 Environmental requirements of adhesive may vary on different materials).

成品保质期 (Shelf Life): 在温度 23±5°C相对湿度 50±10%的情况下, 避光、不密封, 可储

From the date of manufacture, 1 year at 23±5°C / 50%±10%RH), un-seal the vacuum bag and avoid direct sunlight exposure..

P.N./Revision	Data Sheet	Page
T1A10XXX/L2		3/3

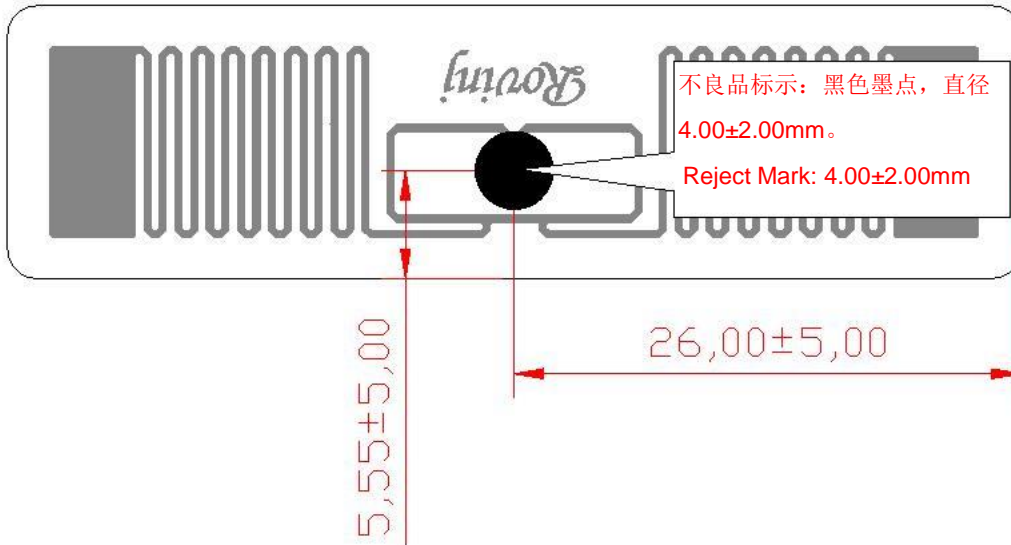
Disclaimer: Our recommendations are based on our latest knowledge and experience, we reserve all rights for final explanation.

**4. 作业使用警示 ( Handling Precautions)**

4.1 标记有黑色墨点的为不良品，请勿使用。废标位置如下图所示。

Inlays with ink marks are bad ones. DO NOT USE.

The position of the mark is shown as below.



4.2 搬运及使用时防水、禁止剧烈撞击、禁止挤压或弯折芯片部分。

Keep away from water and collision. DO NOT BEND.

**5. 包装 (Packaging)**

下图为参考包装图：抽真空包装(抽真空包装，仅为运输过程中防雨措施；储存产品时请按照规格书中【第 3项环境要求】操作)；4,000±100 Pcs/卷,8卷/箱(以实际出货为准)。

备注：每卷开头和结尾均需留 **3pcs** 空 **Mark**，不需留 **wet inlay**。

Reference Packing: vacuumed packing in ESD bag; 4,000±100 Pcs/roll, 8rolls/ctn.

Note: Vacuum packing provides protection during transportation, for product storage please refer to “No. 3 Environmental Requirement”.(Actual Qty as per Shipping Mark)



存一年。

声明：以上环境要求的建议基于我司最新的知识和现有经验基础上，本公司保留产品最终解释权。

**Note:**

- 1. If there is any change in the manual, please refer to the latest version.*
- 2. Guangzhou Rovinj Information Technology Co., Ltd. reserves the right of final interpretation.*